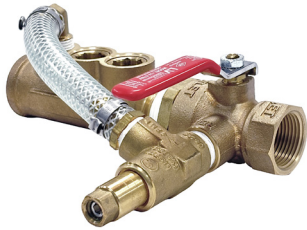
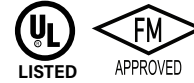


INSPECTORS TEST

MODEL LV-ITBV



Inspectors Test with
Sight Glass & PRV



Inspectors Test
with Sight Glass



Ball Valve

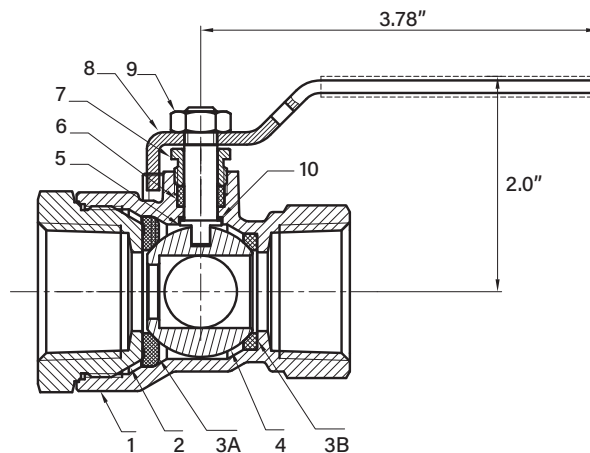
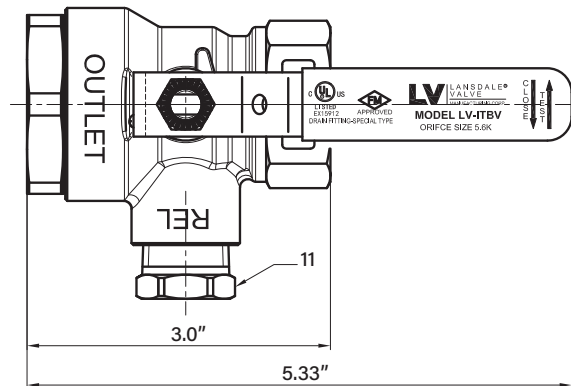


Sight Glass

DESCRIPTION:

The Lansdale Inspectors Test Model LV-ITBV is UL/FM Listed and Approved and is comprised of a 1" ball valve, and optional sight glass and adjustable pressure relief valve, which meets all code requirements for wet sprinkler systems and is available in all configurations shown. It is a compact device available with orifice sizes, including 2.8, 4.2, 5.6, 8.0 and 11.2.

The Model LV-ITBV meets all NFPA 13 requirements, is pressure rated to 300 PSI, and is constructed from corrosion resistant brass.



MATERIAL LIST

No.	DESCRIPTION	MATERIAL	QTY.
1	Body	C84400	1
2	Cap	CW602N	1
3A	Seal	PTFE	1
3B	Seal	PTFE	1
4	Ball	CW602N	1
5	Stem	CW602N	1
6	Packing	PTFE	1
7	Packing Nut	HPb59-1	1
8	Handle	Q235A	1
9	Nut	Q235A	1
10	Washer	PTFE	1
11	Plug	CW602N	1

PROJECT	APPROVAL STAMP
PROJECT:	<input type="checkbox"/> APPROVED
ADDRESS:	<input type="checkbox"/> APPROVED AS NOTED
ENGINEER:	<input type="checkbox"/> NOT APPROVED
SUBMITTAL DATA:	REMARKS:
NOTES 1:	
NOTES 2:	