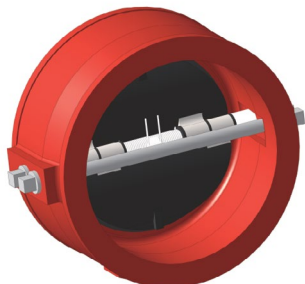


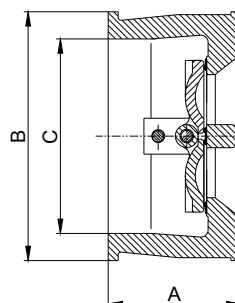
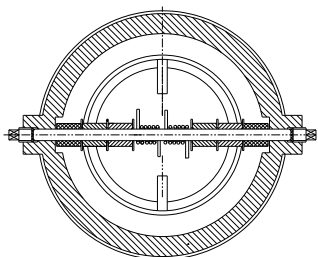
# WAFER CHECK VALVE- DOUBLE DOOR

MODEL LVWCV-DD



## FEATURES:

- Meet or exceed the requirements of UL312 and API 584 standard
- Spring loaded for fast closure
- Vertical or horizontal installation
- Resilient-seated for perfect tightness even at low differential pressure
- Excellent flow characteristics and low pressure losses at high flow rates
- Connection ends comply with ASME B16.1 Class 125 and ASME B16.5 Class 150 Flanges
- Rated working pressure-300 psi @ 32 F° to 189 F°
- UL 312/ULC Listed
- Fusion bonded coating interior and exterior meet or exceed all applicable of AWWA C550 standard



MATERIAL SPECIFICATIONS		
PART	MATERIAL	ASTM SPECIFICATIONS
Body	Ductile Iron	A536 Grade 65-45-12
Body Seat Ring	Rubber	D2000 EPDM/NBR
Disc	Stainless Steel	A351 Grade CF8/CF8M
Hinge Pin	Stainless Steel	A276 Grade 416
Spring	Stainless Steel	A276 Grade 304
Stop Pin	Stainless Steel	A276 Grade 416
Pin Retainer	Carbon Steel	A105

MAIN DIMENSIONS (In)					
SIZE	4	6	8	10	12
A	3.66	4.13	4.75	6.00	7.36
B	6.75	8.66	11.00	13.40	16.14
C	5.35	7.00	9.00	11.25	13.31

ITEM NUMBER	ITEM DESCRIPTION
700-225-01145	4" Wafer Check Valve Double Door - UL
700-225-01146	6" Wafer Check Valve Double Door - UL
700-225-01147	8" Wafer Check Valve Double Door - UL
700-225-01148	10" Wafer Check Valve Double Door - UL
700-225-01149	12" Wafer Check Valve Double Door - UL

PROJECT	APPROVAL STAMP
PROJECT:	<input type="checkbox"/> APPROVED
ADDRESS:	<input type="checkbox"/> APPROVED AS NOTED
ENGINEER:	<input type="checkbox"/> NOT APPROVED
SUBMITTAL DATA:	REMARKS:
NOTES 1:	
NOTES 2:	